

I THE SEA

Frank Corcoran

MOLTO

S¹ *mf* *f* *p*
LOOK, LOOK, WILD AND WIDE, NORTH EAST THE TIDE!

S² *mf* *f* *p*
LOOK, LOOK, WILD AND WIDE, THE TIDE!

A *mf* *f* *mp*
LOOK, LOOK, WILD AND WIDE NORTH EAST THE TIDE!

T *mf* *f* *mp* BE—
LOOK LOOK, WILD AND WIDE NORTHEAST THE TIDE BE—

B *mf* *f* *p* *mp*
LOOK LOOK, WILD AND WIDE NORTH-EAST THE TIDE, BE—

MOSSO

TEMPO I

S¹ *mf*
THE DRA-GONS' BROOD.

S² *mf*
THE DRA-GONS' BROOD.

A *crac.* *mf*
- EATH WHICH BIDE THE DRA-GONS' BROOD.

T *crac.* *p*
NEATH WHICH BIDE THE DRA-GONS' BROOD, THE SEALS' DE-LIGHT

B *crac.* *mf* *p*
I EATH WHICH BIDE THE DRA-GONS' BROOD, THE SEALS' DE-LIGHT

mp *cresc*

S1 MOUNTS TO FULL HEIGHT THE SEA'S IN FLOOD.

mp *cresc*

S2 MOUNTS TO FULL HEIGHT THE SEA'S IN FLOOD.

cresc

A MOUNTS TO FULL HEIGHT THE SEA'S IN FLOOD.

cresc

MOUNTS TO FULL HEIGHT THE SEA'S IN FLOOD

3 *2 cresc.*

MOUNTS TO FULL HEIGHT THE SEA'S IN FLOOD.

II WINTER

ANDANTE

1 THE WIND —

2 THE WIND

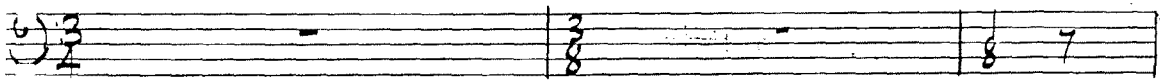
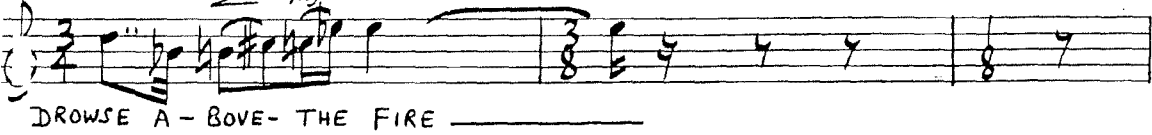
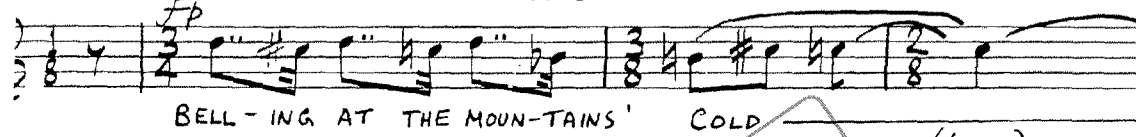
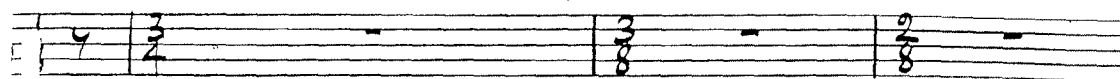
fp MA CON INTENSITA'

WIN — TER TIME IS BLEAK, THE WIND — DRIVES THE STAR FROM HEIGHT TO H

1

2

3



Sample page only

S. 1 *mp* *mf* *p* A-BOUT A SWORD — AND *mp*

S. 2 HAND WAS TIGHT A-BOUT A SWORD — AND *mp*

A HAND WAS TIGHT A-BOUT A SWORD —

T. 1 A BAT-TLE-AXE OR SPEAR *mp*

T. 2 A BAT-TLE-AXE OR SPEAR *mp*

B

S. 1 *p* THO' I SLEEP COLD TO-NIGHT GOD, I OF-FER THANKS TO YOU *mp* *Poco RIT.*

S. 2 THO' I SLEEP COLD TO-NIGHT GOD, I OF-FER THANKS TO YOU *mp*

A THO' I SLEEP COLD TO-NIGHT GOD, I OF-FER THANKS TO YOU *mp*

T. 1

T. 2

B *p* THO' I SLEEP COLD TO-NIGHT GOD I OF-FER THANKS TO YOU *mp*