

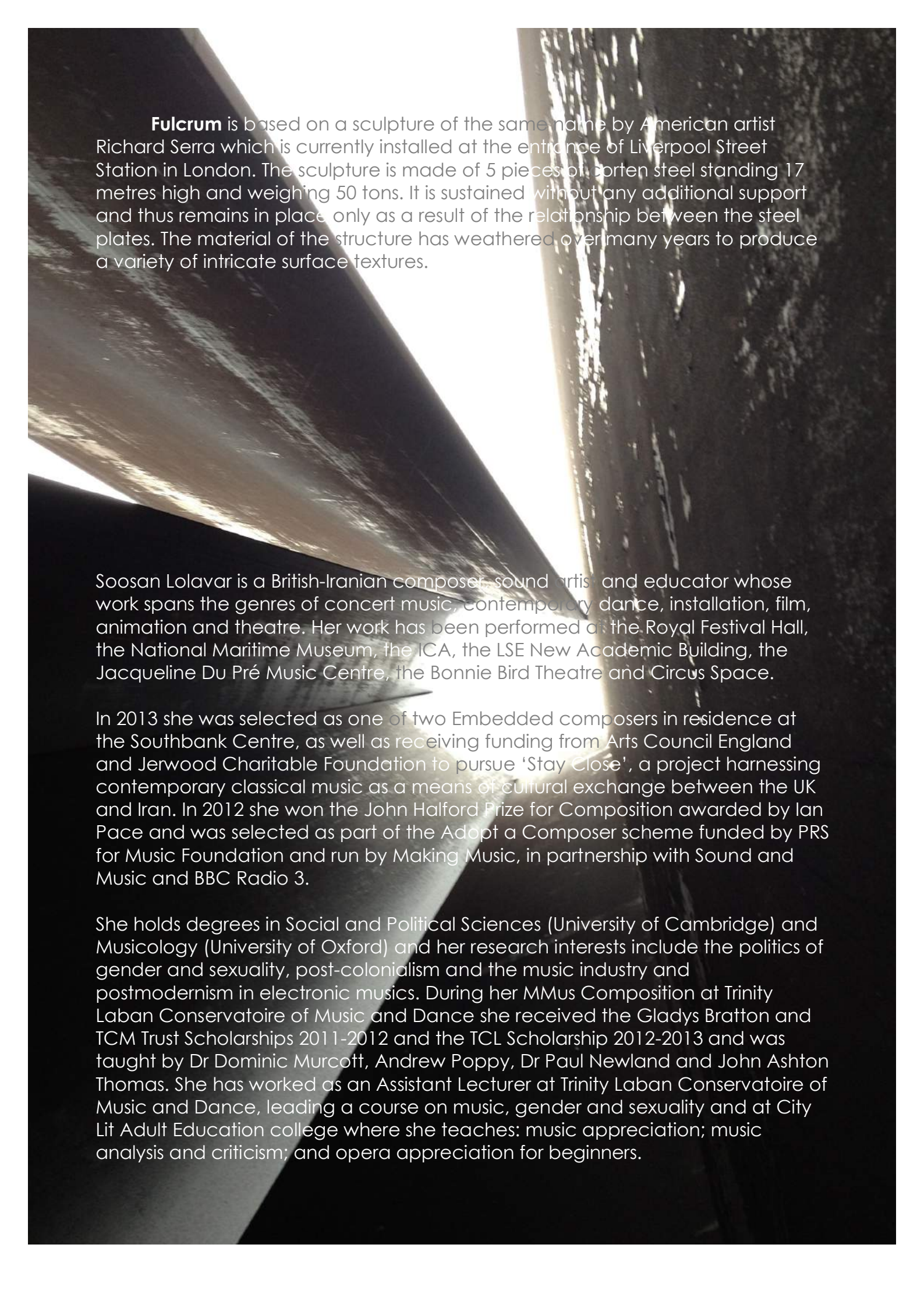


Fulcrum

for solo harp

Soosan Lolavar

(2013)



Fulcrum is based on a sculpture of the same name by American artist Richard Serra which is currently installed at the entrance of Liverpool Street Station in London. The sculpture is made of 5 pieces of corten steel standing 17 metres high and weighing 50 tons. It is sustained without any additional support and thus remains in place only as a result of the relationship between the steel plates. The material of the structure has weathered over many years to produce a variety of intricate surface textures.

Soosan Lolavar is a British-Iranian composer, sound artist and educator whose work spans the genres of concert music, contemporary dance, installation, film, animation and theatre. Her work has been performed at the Royal Festival Hall, the National Maritime Museum, the ICA, the LSE New Academic Building, the Jacqueline Du Pré Music Centre, the Bonnie Bird Theatre and Circus Space.

In 2013 she was selected as one of two Embedded composers in residence at the Southbank Centre, as well as receiving funding from Arts Council England and Jerwood Charitable Foundation to pursue 'Stay Close', a project harnessing contemporary classical music as a means of cultural exchange between the UK and Iran. In 2012 she won the John Halford Prize for Composition awarded by Ian Pace and was selected as part of the Adopt a Composer scheme funded by PRS for Music Foundation and run by Making Music, in partnership with Sound and Music and BBC Radio 3.

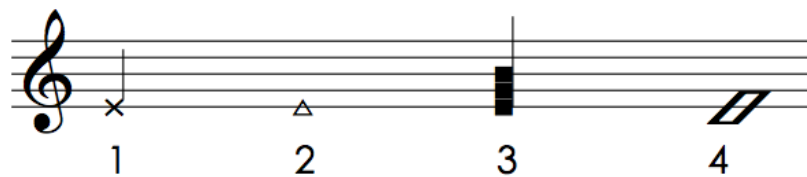
She holds degrees in Social and Political Sciences (University of Cambridge) and Musicology (University of Oxford) and her research interests include the politics of gender and sexuality, post-colonialism and the music industry and postmodernism in electronic musics. During her MMus Composition at Trinity Laban Conservatoire of Music and Dance she received the Gladys Bratton and TCM Trust Scholarships 2011-2012 and the TCL Scholarship 2012-2013 and was taught by Dr Dominic Murcott, Andrew Poppy, Dr Paul Newland and John Ashton Thomas. She has worked as an Assistant Lecturer at Trinity Laban Conservatoire of Music and Dance, leading a course on music, gender and sexuality and at City Lit Adult Education college where she teaches: music appreciation; music analysis and criticism; and opera appreciation for beginners.

For solo harp

Duration 4'14''

Additional equipment required:

1. One credit card
2. A section of tinfoil wrapped around strings C2, D2 and E2 on both harps (see image)



Key to special noteheads

1. Knock soundboard
2. Scrape nail up string (as noisily as possible)
3. Hit strings with open palm
4. Scrape credit card up string

Mechanical and precise ♩ = 90

Harp

1 2 3 4

Hp.

5 6 7 8

Hp.

9 10 11 12

Hp.

13 14 15 16

Hp.

17 18 19 20

20

Hp.

ff

23

Hp.

fff

26

Hp.

mf \longrightarrow *fff*

30

Hp.

mp \longrightarrow *ff*

34

Hp.

mf \longrightarrow *ff* \longrightarrow *mf*

38

Hp.

mp

ff 3

42

Hp.

mp

46

Hp.

p

mf

ff

50

Hp.

p

p

54

Hp.

ff

mf

mf

58

Hp.

p

ff

62

Hp.

ff

mp

ff

67

Hp.

ff

mf

ff

mp

ff

73

Hp.

f

mf

mf

ff

78

Hp.

ff

mf

mf

82

Hp.

mf

mf

ff

f

Detailed description: This system contains measures 82 through 85. The right hand (RH) features a rhythmic pattern of eighth notes with 'x' marks above them, indicating muffled sounds. The left hand (LH) has a melodic line with a fermata over the first measure and a dynamic marking of *ff*. The second measure has a dynamic marking of *mf*. The third measure has a dynamic marking of *mf*. The fourth measure has a dynamic marking of *f*. The key signature has one flat, and the time signature is 3/4.

86

Hp.

mp

mf

Detailed description: This system contains measures 86 through 89. The right hand (RH) has a melodic line with eighth notes. The left hand (LH) has a melodic line with a fermata over the first measure and a dynamic marking of *mf*. The second measure has a dynamic marking of *mp*. The key signature has one flat, and the time signature is 3/4.

90

Hp.

p

mp

Detailed description: This system contains measures 90 through 92. The right hand (RH) has a melodic line with eighth notes. The left hand (LH) has a melodic line with a fermata over the first measure and a dynamic marking of *mp*. The second measure has a dynamic marking of *p*. The key signature has one flat, and the time signature is 3/4.

93

Hp.

p

pp

long

ppp

Detailed description: This system contains measures 93 through 96. The right hand (RH) has a melodic line with eighth notes and a triplet of eighth notes in the second measure. The left hand (LH) has a melodic line with a fermata over the first measure and a dynamic marking of *ppp*. The second measure has a dynamic marking of *p*. The third measure has a dynamic marking of *pp*. The fourth measure has a dynamic marking of *ppp* and a 'long' marking above a fermata. The key signature has one flat, and the time signature is 3/4.