

Hugo Bell

The Path Contorts as the Traces Fade

for hyperorgan

(2020)

Hugo Bell

The Path Contorts as the Traces Fade

for hyperorgan

c.9 mins

Notation - Time

- The piece is written using space-time notation where each system should be approximately the same length and the proportional relationship between musical events should be observed.
- The ideal length of each system is between 30-45 seconds. This aspect of the piece is at the performer's discretion.
- Fermatas should be between 3-5 seconds in length.
- Dotted barlines are used to indicate new actions and do not relate to time.
- Action boxes and registration boxes are left-aligned to indicate when an action should begin.
- Arrows after action boxes indicate the duration of a repeated action.

Notation - Instrument

- Each manual is presented on a separate staff, and is grouped with additional staves corresponding to parameters (such as Pulse Width and Pulse Frequency) and registration.
- Registration is presented in shorthand by pipe length, abbreviation and stop number eg. **8 Rf (38)** corresponds to the 8' Rohrflött which is number 38 on the console

- '+' and '-' symbols indicate the addition or removal of stops.
- Hybrid '+/-' symbol indicates the addition and removal of specified stops in free combinations, to be performed rhythmically, alternating between durations of c. 1", 2" or 3" (ie. short, medium, long).
- Arrows within a registration box indicate the order in which certain **lengths** of stops are to be added or removed.
Eg. 16' → 8s → 4s → 3 → 2s indicates that the 16' stop should be removed first, followed by the 8' stops etc.
- The timbral hierarchy of similar length stops are not specified in the score, which is at the taste and discretion of the performer, eg. in the above example, the performer is free to choose the order of the 8' stops in the sequence.
- It is recommended that registration changes be as seamless as possible.

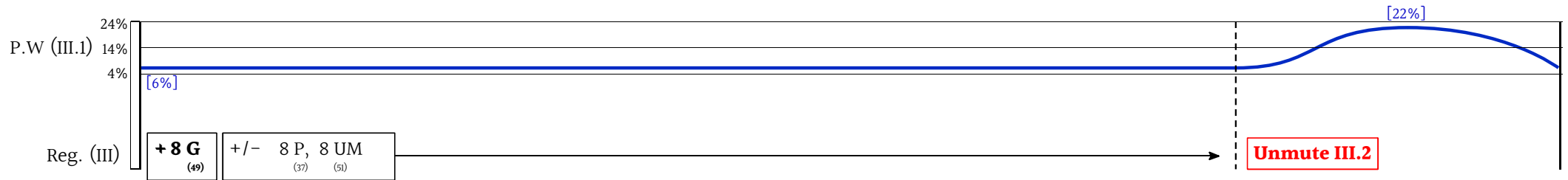
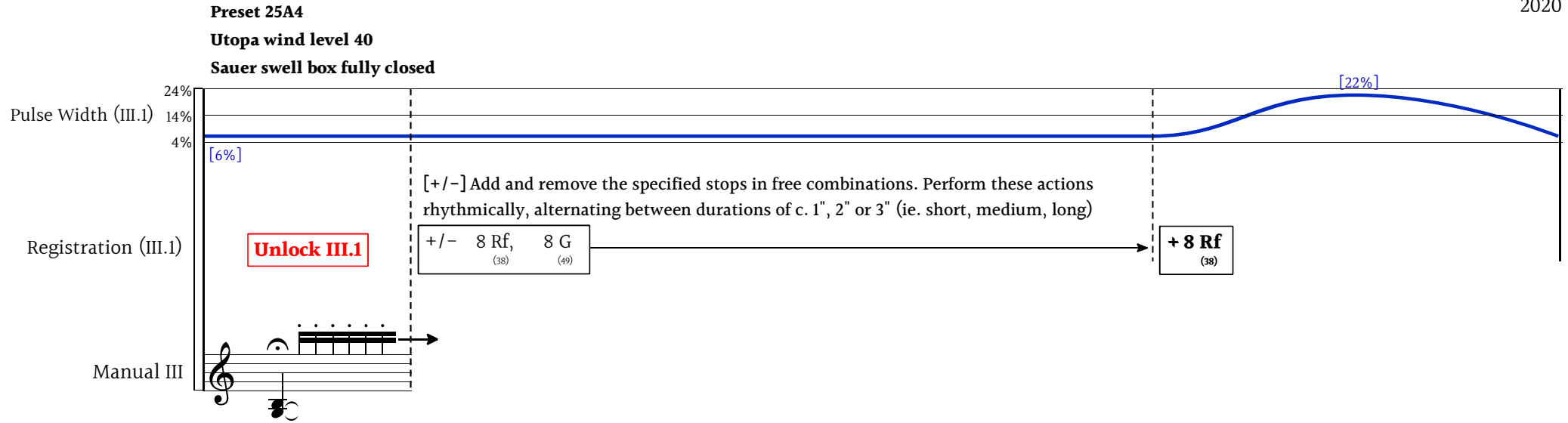
Notes on the preset (25A4)

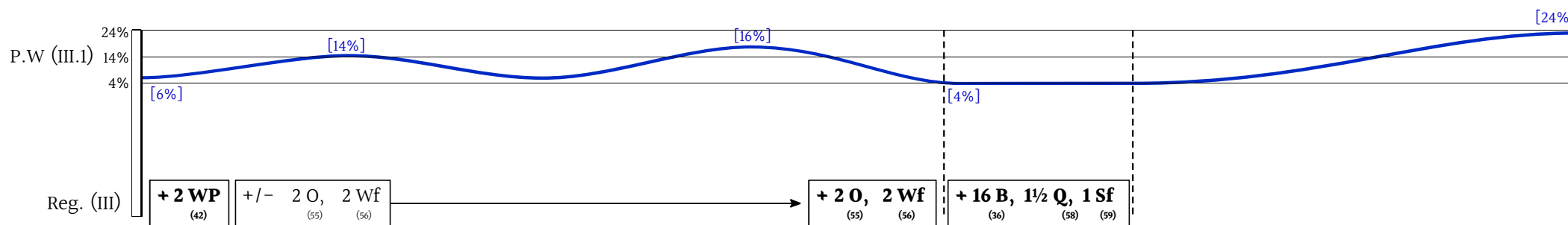
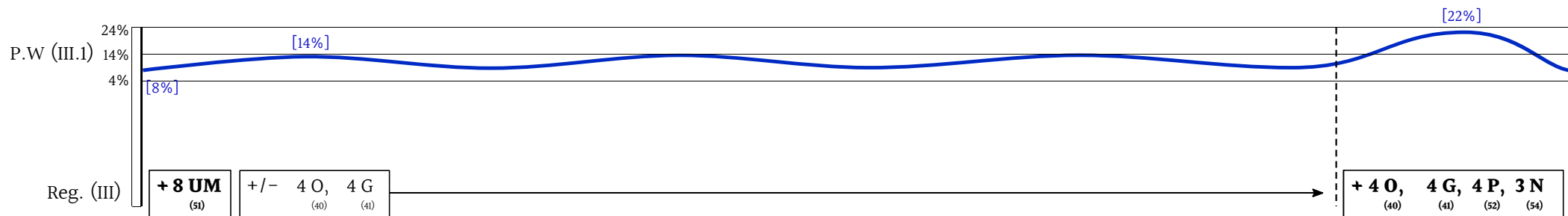
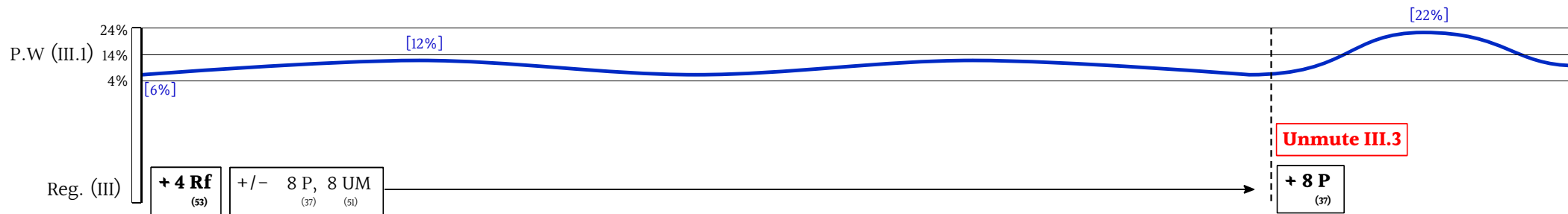
Every layer in the preset includes the 'Sustain' function of the hyperorgan which is set at a velocity of 80%. This is indicated with an open tie in the score. If the keys are pressed above this velocity then all sustained notes will be cancelled. If a sustained note is pressed again it will also be cancelled which is indicated by a notehead with a line through it.

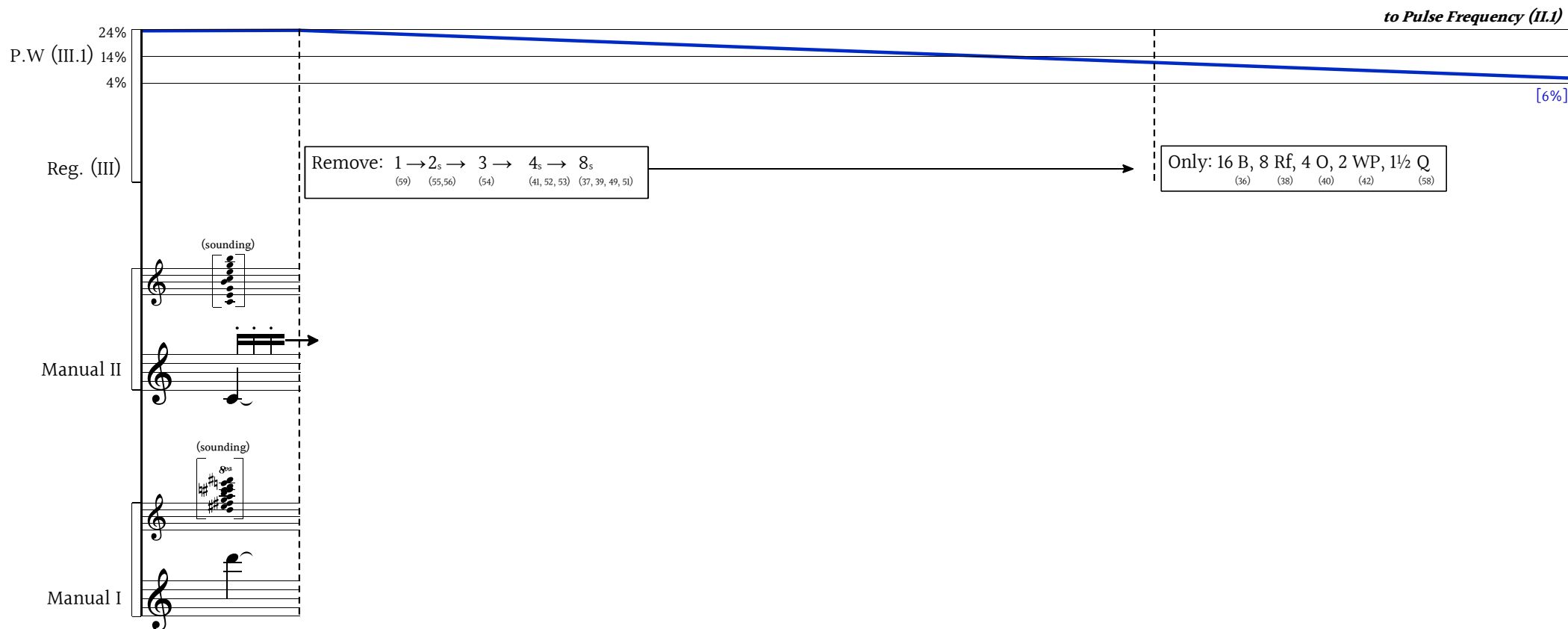
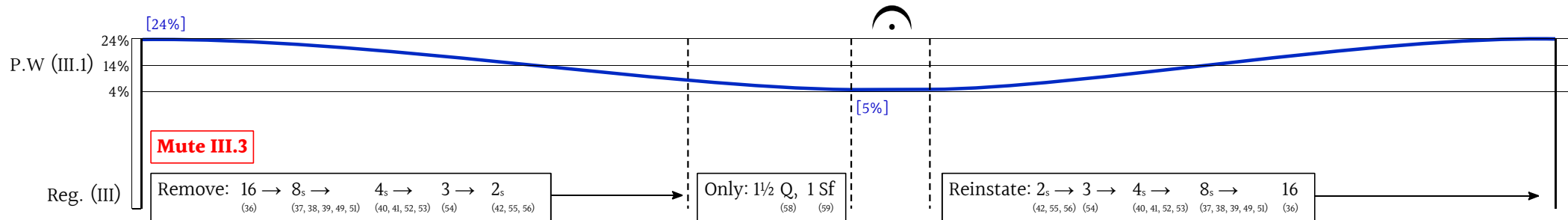
- Manual III
 - Layer 1: Quintathen 8' (39), Pulse Frequency 129ms, Pulse Width 6%
 - Layer 2: Subbass 16' (63), Transpose M7, Pulse Frequency 133ms, Pulse Width 4%, Muted
 - Layer 3: Quintbass 12' (64), Transpose 5, Pulse Frequency 205ms, Pulse Width 80%, Muted
- Manual II
 - Layer 1: Custom Stop '*200126_Hugo...*', Pulse Frequency 129ms, Pulse Width 12%
- Manual I
 - Layers 1-11: Aeoline 8' (30), Tremulant (29), Transpositions on each layer (1: No transposition / 2: m3 / 3: M3 / 4: 4 / 5: 5 / 6: M6 / 7: m7 / 8: M7 / 9: 8 / 10: super M2 / 11: super M3)
- Pedals
 - Layers 1-4: Schwell-gedeck 16' (12), Transpositions on each layer (1: sub / 2: sub m2 / 3: sub M2 / 4: sub m3)

The Path Contorts as the Traces Fade

Hugo Bell
2020







Oscillate between the indicated values. Perform this action with regular periodicity.

The top section of the page shows a musical score for P.F. (II.1) and Reg. (II). The P.F. (II.1) staff has a vertical axis with values 70ms, 120ms, and 170ms. A green waveform oscillates between 120ms and 170ms. A box labeled [99ms] is positioned above the waveform, and a box labeled [169ms] is positioned below it. A red box labeled 'Unlock II.1' is located to the left of the waveform. The Reg. (II) staff contains musical notation in treble and bass clefs. A vertical dashed line is positioned at the end of the first measure.



The bottom section of the page shows a musical score for Reg. (III) and Reg. (II). The Reg. (III) staff has a vertical axis with values 70ms, 120ms, and 170ms. A green waveform oscillates between 120ms and 170ms. A box labeled [99ms] is positioned above the waveform, and a box labeled [169ms] is positioned below it. A red box labeled 'Mute III.1' is located above the waveform. The Reg. (II) staff contains musical notation in treble and bass clefs. A box containing '+ 2 O, 2 Wf' with subscripts (55) and (56) is located to the right of the Reg. (II) staff. Vertical dashed lines are positioned at the end of the first, second, and third measures.

70ms
P.F (II.1) 120ms
170ms

Reg. (II)

II

faster oscillations

[69ms]

[89ms]

[189ms]

[59ms]

+ Mix
(44)

Detailed description: This system shows a musical score with two main tracks: P.F (II.1) and Reg. (II). The P.F track has three green waveforms overlaid, with durations of 69ms, 89ms, and 59ms. A box labeled 'faster oscillations' contains a green sine wave with a duration of 189ms. The Reg. track includes a box '+ Mix (44)'. The score is written in treble and bass clefs with various notes and accidentals.

70ms
P.F (II.1) 120ms
170ms

Reg. (II)

II

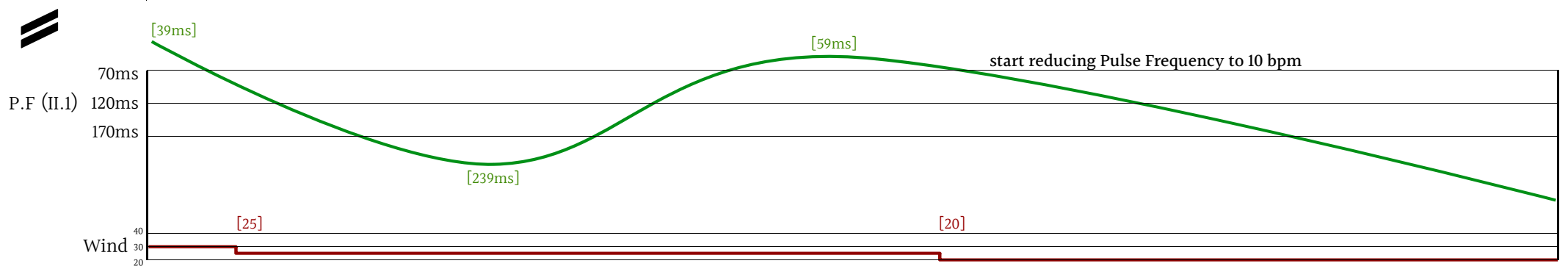
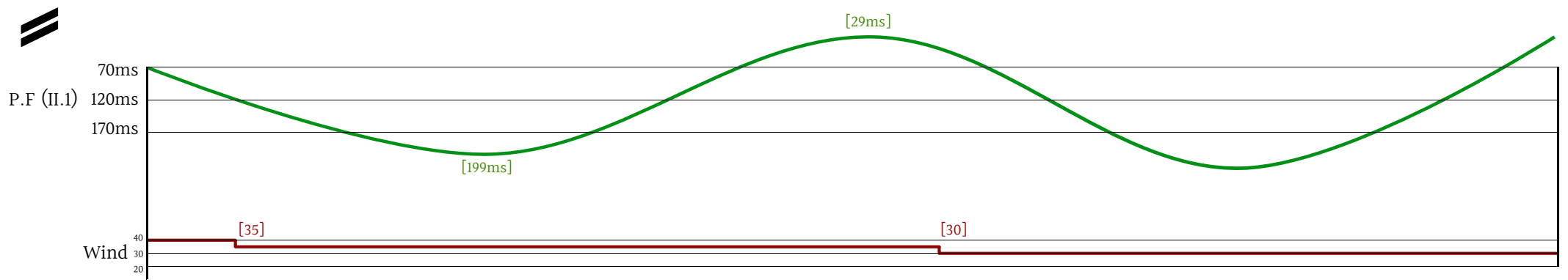
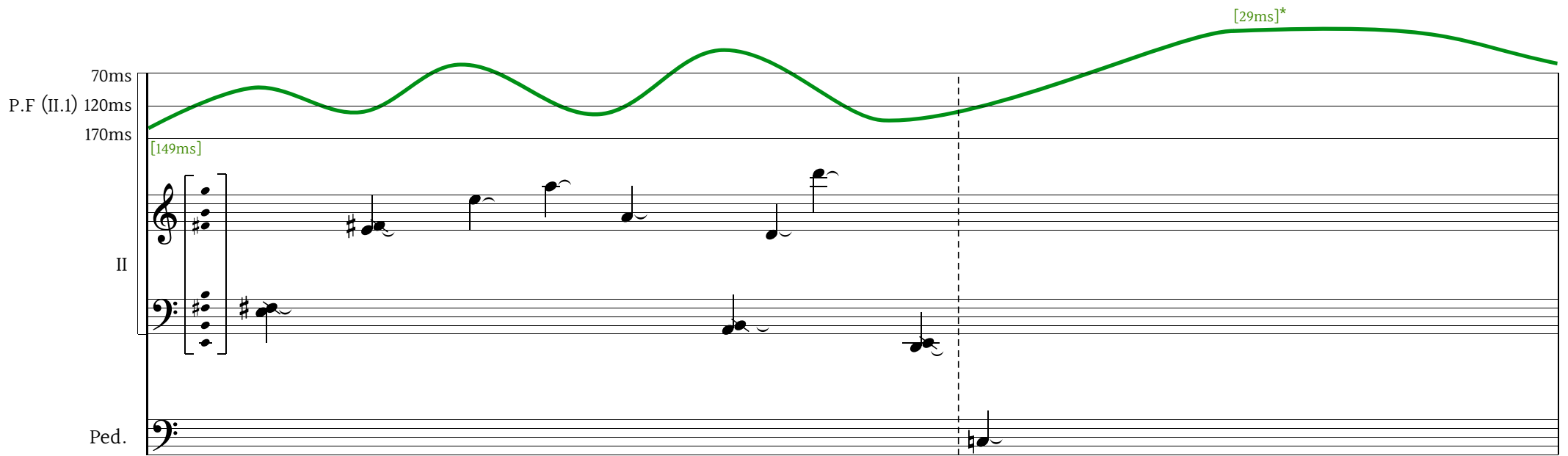
[89ms]

[189ms]

+ Cymb
(45)

+ 16 & 8 Reeds
(47) (48)

Detailed description: This system continues the musical score. The P.F track has a green waveform with a duration of 89ms and a box labeled [189ms]. The Reg. track includes boxes for '+ Cymb (45)' and '+ 16 & 8 Reeds (47) (48)'. The score continues with treble and bass clefs and various musical notations.



*The pulses should become so rapid that it produces a continuous sound. If the sound stops then the parameter value is too high.

poco rit.

Reg. (III)

70ms

P.F (II.1) 120ms

170ms

Reg. (II)

- Mix, Cymb, 16 & 8 Reeds
(44) (45) (47) (48)

- 2 O, 2 Wf
(55) (56)

[10 bpm]

Mute III.2

Mute II.1

I

Ped.

Detailed description: The image shows a musical score for a piano. At the top, there is a tempo marking 'poco rit.' followed by a dotted line. Below this, there are three horizontal lines representing different registers: 'Reg. (III)' at the top, 'P.F (II.1)' in the middle, and 'Reg. (II)' at the bottom. A green curve starts at the top left and slopes downwards to the right, ending at a point labeled '[10 bpm]'. There are four vertical dashed lines across the score. The first is at the start of the 'Reg. (II)' section. The second is at the start of the 'I' section. The third is at the start of the 'Ped.' section. The fourth is at the end of the 'Mute III.2' and 'Mute II.1' sections. There are two boxes with text: one for 'Reg. (II)' containing '- Mix, Cymb, 16 & 8 Reeds' with sub-indices (44), (45), (47), (48); and another for 'Reg. (II)' containing '- 2 O, 2 Wf' with sub-indices (55), (56). There are also two red boxes: 'Mute III.2' and 'Mute II.1'. The 'I' section has a treble clef and a single note. The 'Ped.' section has a bass clef and a single note. The score ends with a double bar line.