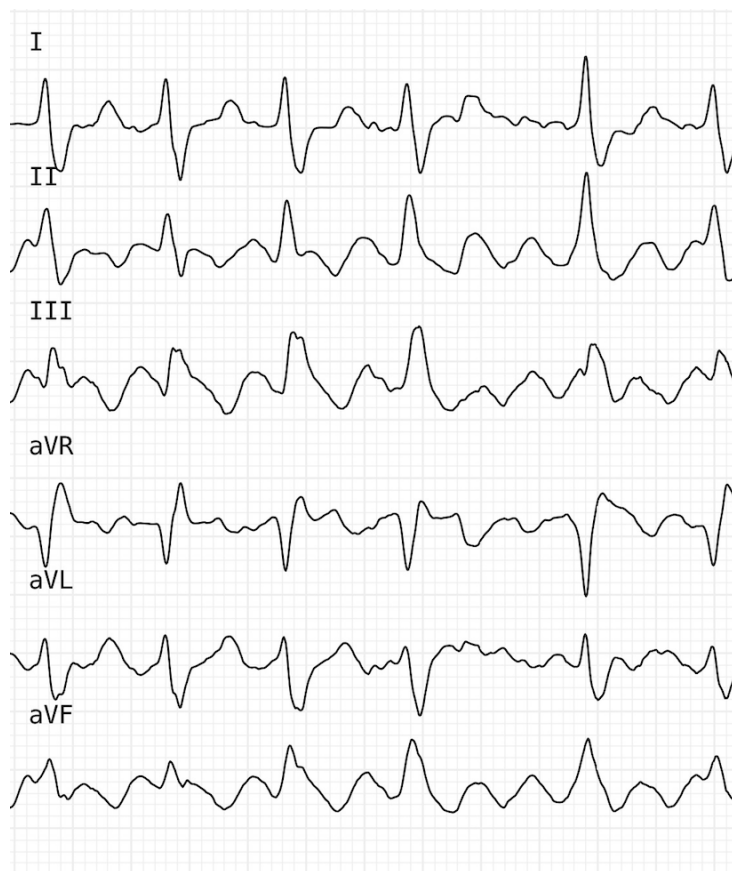


Derek B Scott

Fibrillation Fantasy, Op. 41

for orchestra



Fibrillation Fantasy, Op. 41 (2022)

For Orchestra.

After rushing up a hill in September 2019, I had my first experience of atrial fibrillation, which made my heart race irregularly at speeds of 130–160 a minute. Medication solved the problem for two years, but my arrhythmia returned in December 2021. A cardioversion in February returned my heart to sinus rhythm for only three or four days, but then I developed atrial flutter and was told I must wait six months for a catheter ablation. Having been informed that I had ‘an excitable atrium’, I thought I might turn some of that excitability, as well as some of its attendant anxiety, into a fantasy for orchestra. This composition refers to these experiences by using an irregular rhythm excerpted from one of my electrocardiogram tests, which, converted into musical notation, manifests itself in a grouping of 4 + 4 + 5 + 6 + 5 quavers that persists throughout much of this piece. *Fibrillation Fantasy* was composed during March and April 2022.

Derek B. Scott

Fibrillation Fantasy

Derek B. Scott
Op. 41 (2022)

Cercando di essere calmo $\text{♩} = 80$

Flute *p*

Oboe *p* ^{a2}

Clarinet in B \flat *pp* ¹

Bassoon *pp* *p*

Horns 1&2 *pp*

Horns 3&4 *pp*

Trumpet in B \flat *pp* straight mute

Trombone 1

Trombone 2

Bass Trombone

Tuba

Timpani *pp* C, A \flat (high), G (low)

Snare Drum

Bass Drum

Wood Block *p* (low wood block)

Violin I *pp*

Violin II *pp*

Viola *pp*

Cello *pp*

Contrabass *pp* pizz. div.

Fibrillation Fantasy

8

Fl. *mp* *p*

Ob. *mp* *p*

B♭ Cl. *mp* *mp*

Bsn. *mp* *a2*

Hns 1&2

Hns 3&4 *p*

B♭ Tpt.

Tbn. 1

Tbn. 2

B. Tbn.

Tuba

Timp.

S. Dr.

B. Dr.

W. Bl. *mp*

Vln. I *p*

Vln. II *p*

Vla. *p*

Vc. *p*

Cb. *p*

A

Musical score for woodwinds and percussion, measures 15-24. The score includes parts for Flute (Fl.), Oboe (Ob.), Bass Clarinet (B♭ Cl.), Bassoon (Bsn.), Horns 1 & 2 (Hns 1&2), Horns 3 & 4 (Hns 3&4), Trumpet (B♭ Tpt.), Trumpet 1 (Tbn. 1), Trumpet 2 (Tbn. 2), Baritone Trumpet (B. Tbn.), Tuba, and Timpani (Timp.). The music is in 2/4 time and features a complex rhythmic pattern with many sixteenth notes. Dynamics include *f* (forte) and *p* (piano). The B♭ Trumpet part is marked "senza sord." (without mutes). The Timpani part has a *f* dynamic. The woodwinds and strings (not shown in this section) play a rhythmic accompaniment.

A

Musical score for strings, measures 15-24. The score includes parts for Violin I (Vln. I), Violin II (Vln. II), Viola (Vla.), Violoncello (Vc.), and Contrabass (Cb.). The music is in 2/4 time and features a complex rhythmic pattern with many sixteenth notes. Dynamics include *f* (forte) and *non div.* (non-diviso). The Violin I and II parts are marked "non div." and "unis." (unison). The Viola part is marked "non div." and "unis." The Violoncello part is marked "unis." and "arco" (arco). The Contrabass part is marked "arco" and "f".

Fibrillation Fantasy

22

Fl.

Ob.

B \flat Cl.

Bsn.

Hns 1&2

Hns 3&4

B \flat Tpt.

Tbn. 1

Tbn. 2

B. Tbn.

Tuba

Timp.

S. Dr.

B. Dr.

W. Bl.

Vln. I

Vln. II

Vla.

Vc.

Cb.

mf

mp

f

pizz.

mf

Fibrillation Fantasy

30

Fl.

Ob. *solo* *p*

B♭ Cl.

Bsn.

Hns 1&2

Hns 3&4

B♭ Tpt.

Tbn. 1

Tbn. 2

B. Tbn.

Tuba

Timp.

S. Dr.

B. Dr.

W. Bl.

Vln. I

Vln. II

Vla.

Vc.

Cb.

Detailed description: This page of a musical score for 'Fibrillation Fantasy' covers measures 30 to 35. The score is for a full orchestra. The Oboe part features a solo in measure 30, marked *p* (piano). The woodwind section includes parts for Flute, Bassoon, Clarinet, and Woodwinds. The brass section includes parts for Horns, Trumpets, Trombones, and Tuba. The percussion section includes parts for Timpani, Snare Drum, and Bass Drum. The string section includes parts for Violins I and II, Viola, Violoncello, and Contrabass. The score is written in a key signature of one sharp (F#) and a common time signature. The music is characterized by complex rhythmic patterns and dynamic markings.

Fibrillation Fantasy

B

poco rit. **Con atrio eccitato**

37

Fl. *mf*

Ob. *mf*

B \flat Cl.

Bsn. *p*

Hns 1&2 *p* *mf*

Hns 3&4 *p* *mf*

B \flat Tpt. *f* ^{1 solo}

Tbn. 1 *mf* *solo*

Tbn. 2

B. Tbn.

Tuba *p*

Timp.

S. Dr.

B. Dr.

W. Bl. *mp*

B *poco rit.* **Con atrio eccitato**

Vln. I *p*

Vln. II *p*

Vla. *p* *f*

Vc. *p* *f*

Cb. *arco* *p* *f*

Fibrillation Fantasy

C

52

Fl.

Ob.

B \flat Cl.

Bsn.

Hns 1&2

Hns 3&4

B \flat Tpt.

Tbn. 1

Tbn. 2

B. Tbn.

Tuba

Timp.

S. Dr.

B. Dr.

W. Bl.

f

A \flat to F \sharp
C to E \flat

C

Vln. I

Vln. II

Vla.

Vc.

Cb.

59

Fl.

Ob.

B♭ Cl.

Bsn.

Hns 1&2

Hns 3&4

B♭ Tpt.

Tbn. 1

Tbn. 2

B. Tbn.

Tuba

Timp.

S. Dr.

B. Dr.

W. Bl.

Vln. I

Vln. II

Vla.

Vc.

Cb.

ff

f

mf

div. pizz.

f

div. pizz.

div. pizz.

sempre

65

Fl. *f*

Ob. *f*

B♭ Cl. *f*

Bsn. *mf* *f* a2

Hns 1&2 *mf* #8

Hns 3&4 Hn 4 *f* #8

B♭ Tpt. *f* solo

Tbn. 1 *f*

Tbn. 2 *f*

B. Tbn. *f*

Tuba *f*

Timp.

S. Dr. *f*

B. Dr. *f*

W. Bl.

Vln. I *f*

Vln. II *f*

Vla. *f*

Vc. *f*

Cb. *f*

D

Tentativo di calmarsi

1

Musical score for woodwinds and percussion, measures 71-80. The score includes parts for Flute (Fl.), Oboe (Ob.), Clarinet in B-flat (B♭ Cl.), Bassoon (Bsn.), Horns 1 & 2 (Hns 1&2), Horns 3 & 4 (Hns 3&4), Trumpet in B-flat (B♭ Tpt.), Trombone 1 (Tbn. 1), Trombone 2 (Tbn. 2), Baritone Trombone (B. Tbn.), Tuba, and Timpani (Timp.). The Flute part starts at measure 71 with a dynamic of *ff* and a fermata. The Oboe part has a dynamic of *ff* and a fermata. The Clarinet in B-flat part has a dynamic of *ff* and a fermata. The Bassoon part has a dynamic of *ff* and a fermata. The Horns 1 & 2 part has a dynamic of *f* and a fermata. The Horns 3 & 4 part has a dynamic of *ff* and a fermata. The Trumpet in B-flat part has a dynamic of *ff* and a fermata. The Trombone 1 part has a dynamic of *ff* and a fermata. The Trombone 2 part has a dynamic of *ff* and a fermata. The Baritone Trombone part has a dynamic of *ff* and a fermata. The Tuba part has a dynamic of *ff* and a fermata. The Timpani part has a dynamic of *ff* and a fermata. The S. Dr. part has a dynamic of *ff* and a fermata. The B. Dr. part has a dynamic of *ff* and a fermata. The W. Bl. part has a dynamic of *ff* and a fermata. The score ends at measure 80 with a dynamic of *mp*.

D

Tentativo di calmarsi

Musical score for strings, measures 71-80. The score includes parts for Violin I (Vln. I), Violin II (Vln. II), Viola (Vla.), Violoncello (Vc.), and Contrabasso (Cb.). The Violin I part has a dynamic of *ff* and a fermata. The Violin II part has a dynamic of *ff* and a fermata. The Viola part has a dynamic of *ff* and a fermata. The Violoncello part has a dynamic of *ff* and a fermata. The Contrabasso part has a dynamic of *ff* and a fermata. The score ends at measure 80 with a dynamic of *pp*.

Fibrillation Fantasy

79

Fl.

Ob.

B♭ Cl.

Bsn.

Hns 1&2

Hns 3&4

B♭ Tpt.

Tbn. 1

Tbn. 2

B. Tbn.

Tuba

Timp.

S. Dr.

B. Dr.

W. Bl.

Vln. I

Vln. II

Vla.

Vc.

Cb.

mp

pp

mp

p

mp

pp

mp

p

Fibrillation Fantasy

E

Sentirsi meglio ma non tutto bene

86

Fl. *p*

Ob. *p*

B♭ Cl.

Bsn.

Hns 1&2

Hns 3&4

B♭ Tpt.

Tbn. 1

Tbn. 2

B. Tbn.

Tuba

Timp.

S. Dr.

B. Dr.

W. Bl. *mp*

F# to F#
E# to C

f

Wood block

E

Sentirsi meglio ma non tutto bene

Vln. I *f* div.

Vln. II *f* div. *b*

Vla. *f* div. *b*

Vc. *f* div. *b*

Cb. *f*

pizz.

arco

Fibrillation Fantasy

94

Fl. *mp* *p*

Ob. *mp* *p*

B> Cl. *mp* *p*

Bsn. *mp* *p*

Hns 1&2 *mf* *mp* *mf*

Hns 3&4 *mf* *mp*

B> Tpt. *mf* *mf*

Tbn. 1 *mf* *mf*

Tbn. 2 *mf* *mf*

B. Tbn. *mf* *mf*

Tuba *mf*

Timp. *mf*

S. Dr.

B. Dr.

W. Bl.

Vln. I *mf*

Vln. II *mf*

Vla. *mf*

Vc. *mf*

Cb. *mf*

107

Fl. *f* a2

Ob. *f* a2

B♭ Cl. *f* a2

Bsn. *f*

Hns 1&2 *f* Hn 1

Hns 3&4 *f* Hn 3

B♭ Tpt. *f*

Tbn. 1 *f*

Tbn. 2 *f*

B. Tbn. *f*

Tuba *f*

Timp. *f*

S. Dr.

B. Dr.

W. Bl.

Vln. I *f* div. *mp* *f* unis.

Vln. II *f* div. *mp* *f*

Vla. *f* *mp* *f*

Vc. *f* *mp* *f*

Cb. *f* *mp* *f*

F

Cercando di mantenere la calma

Musical score for woodwinds and percussion. The score includes parts for Flute (Fl.), Oboe (Ob.), Bass Clarinet (B♭ Cl.), Bassoon (Bsn.), Horns 1&2 (Hns 1&2), Horns 3&4 (Hns 3&4), Trumpet (B♭ Tpt.), Trombone 1 (Tbn. 1), Trombone 2 (Tbn. 2), Baritone Trombone (B. Tbn.), Tuba, Snare Drum (S. Dr.), Bass Drum (B. Dr.), and Wood Block (W. Bl.). The woodwinds and bassoon have melodic lines with dynamics *pp* and *p*. The percussion parts are mostly rests.

F

Cercando di mantenere la calma

Musical score for strings. The score includes parts for Violin I (Vln. I), Violin II (Vln. II), Viola (Vla.), Violoncello (Vc.), and Contrabass (Cb.). Violin I has a melodic line with dynamics *p* and *pp*. Violin II and Viola play a tremolo accompaniment with dynamics *pp*. Violoncello and Contrabass play a rhythmic accompaniment with dynamics *pp* and *pizz.*

Fibrillation Fantasy

119

Fl.

Ob.

B♭ Cl.

Bsn.

Hns 1&2

Hns 3&4

B♭ Tpt.

Tbn. 1

Tbn. 2

B. Tbn.

Tuba

Timp.

S. Dr.

B. Dr.

W. Bl.

Vln. I

Vln. II

Vla.

Vc.

Cb.

Detailed description: This page of a musical score, numbered 119, contains measures 119 through 123. The score is for a full orchestra and includes parts for Flute (Fl.), Oboe (Ob.), Clarinet in B-flat (B♭ Cl.), Bassoon (Bsn.), Horns 1&2 (Hns 1&2), Horns 3&4 (Hns 3&4), Trumpet in B-flat (B♭ Tpt.), Trombone 1 (Tbn. 1), Trombone 2 (Tbn. 2), Baritone Trombone (B. Tbn.), Tuba, Timpani (Timp.), Snare Drum (S. Dr.), Bass Drum (B. Dr.), Wood Block (W. Bl.), Violin I (Vln. I), Violin II (Vln. II), Viola (Vla.), Violoncello (Vc.), and Contrabass (Cb.). The Flute part features a melodic line with a long note in measure 120. The Oboe part has a rhythmic pattern of eighth notes. The Clarinet and Bassoon parts play a steady eighth-note accompaniment. The Bassoon part has a melodic line in measure 120. The Horns, Trumpets, Trombones, and Tuba parts are mostly silent, indicated by rests. The Timpani part has a rhythmic pattern of eighth notes. The Snare Drum, Bass Drum, and Wood Block parts are also silent. The Violin I part has a melodic line with a long note in measure 120. The Violin II part has a rhythmic pattern of eighth notes. The Viola part has a rhythmic pattern of eighth notes. The Violoncello part has a rhythmic pattern of eighth notes. The Contrabass part has a rhythmic pattern of eighth notes.

124

Fl. *p* *mp*

Ob. *p* *mp*

B♭ Cl. *p* *mp*

Bsn. *p* *mp*

Hns 1&2 *mp* Hn 1

Hns 3&4 *mp* Hn 3

B♭ Tpt.

Tbn. 1

Tbn. 2

B. Tbn.

Tuba

Timp.

S. Dr.

B. Dr.

W. Bl. *p*

Vln. I *mp* div.

Vln. II *p*

Vla. *p*

Vc. *p* *mp*

Cb. *p*

Detailed description: This page of a musical score, titled 'Fibrillation Fantasy', covers measures 124 through 129. The music is arranged for a large orchestra. The flute (Fl.) and oboe (Ob.) parts feature melodic lines with slurs and dynamic markings of *p* and *mp*. The bassoon (Bsn.) and bass clarinet (B♭ Cl.) parts provide harmonic support with similar dynamics. The woodwinds include parts for Hns 1&2, Hns 3&4, B♭ Tpt., Tbn. 1, Tbn. 2, B. Tbn., and Tuba, with Hns 1 and Hns 3 marked *mp*. The percussion section includes S. Dr., B. Dr., W. Bl. (marked *p*), Timp., and Cb. (marked *p*). The strings consist of Vln. I (marked *mp* and *div.*), Vln. II (marked *p*), Vla. (marked *p*), Vc. (marked *p* and *mp*), and Cb. (marked *p*). The score includes various musical notations such as slurs, accents, and dynamic markings.

Fibrillation Fantasy

G

Fl. *mp* *mf* *mp* a2

Ob. *mp* *mf*

B♭ Cl. *mf*

Bsn. *mp*

Hns 1&2 *p* *mf*

Hns 3&4 *p* *mf*

B♭ Tpt. *p* *mf*

Tbn. 1 *mf*

Tbn. 2 *mf*

B. Tbn. *mf*

Tuba *mf*

Timp.

S. Dr.

B. Dr.

W. Bl.

G

Vln. I *mf*

Vln. II *p* *mf*

Vla. *p* *mf*

Vc. *mf*

Cb. *mf* arco

H Sognando che non c'è più

138

Fl. *f* *mf*

Ob. *f* *mf*

B♭ Cl. *mf*

Bsn. *f*

Hns 1&2 *mf*

Hns 3&4 *mf*

B♭ Tpt. *f*

Tbn. 1 *mf*

Tbn. 2 *mf*

B. Tbn. *mf*

Tuba *mf*

Timp. *f*

S. Dr.

B. Dr.

W. Bl.

H

Vln. I *f* *div.*

Vln. II *f* *div.*

Vla. *f* *div.*

Vc. *f* *div.*

Cb. *f* *div.*

Fibrillation Fantasy

146

I

Fl.

Ob.

B♭ Cl.

Bsn.

Hns 1&2

Hns 3&4

B♭ Tpt.

Tbn. 1

Tbn. 2

B. Tbn.

Tuba

Timp.

S. Dr.

B. Dr.

W. Bl.

Vln. I

Vln. II

Vla.

Vc.

Cb.

mp

p

mf

ff

div.

Fibrillation Fantasy

160

Fl. *f*

Ob. *f*

B \flat Cl. *f*

Bsn. *f*

Hns 1&2 *f* a2

Hns 3&4 *f* a2

B \flat Tpt. *mf*

Tbn. 1 *mf*

Tbn. 2 *mf*

B. Tbn. *mf*

Tuba *mf*

Timp. *f*

S. Dr.

B. Dr.

W. Bl. *f* Cymbals

Vln. I *mp* *f* *rit.*

Vln. II *mp* *f*

Vla. *mp* *f*

Vc. *mp* *f*

Cb. *mp* *f*