

Full Score

Instrumentation:

Soprano Solo (Recorded)

SSAA

Violin

Emily Linane

Across The Sea

Duration: 5 minutes

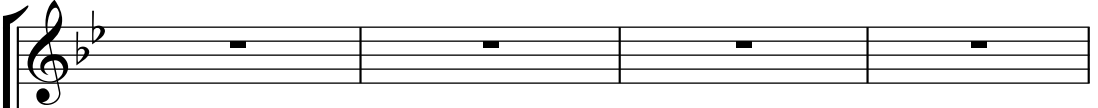
Across The Sea

♩=105

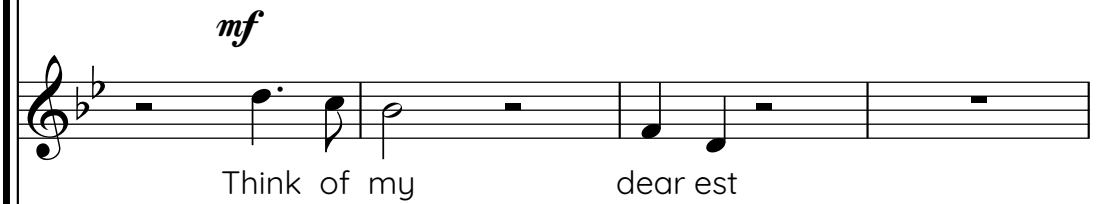
Emily Linane

tenderly

Soprano Solo
Recorded



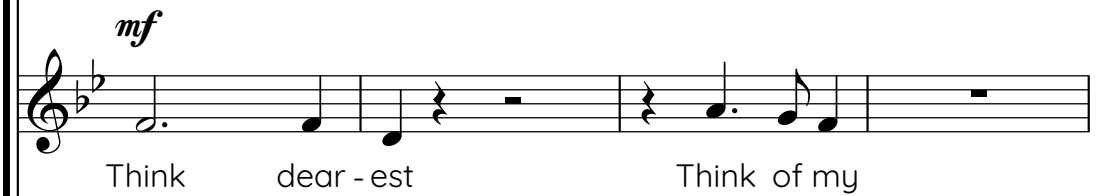
Soprano



Soprano



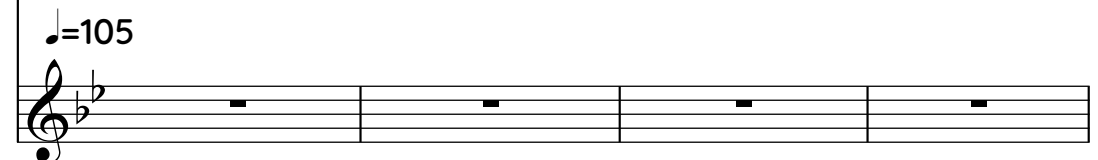
Alto



Alto



Violin



♩=105

5

S. Solo

S.

when morn-ing comes dear est morn_ingcomes

S.

Think of my when comes In the *f*

A.

when comes when morn-ingcomes

A.

morn-ing comes Think of my comes

Vln.

9

S. Solo

Musical staff for S. Solo, showing a whole rest in each of the four measures.

S.

Musical staff for S. with lyrics "In the land sea". The first measure has a whole rest. The second measure contains the notes G4, A4, Bb4, C5, marked *mp*. The third measure has a whole rest. The fourth measure contains the notes G4, A4, Bb4, C5, marked *mp* with a fermata.

S.

Musical staff for S. with lyrics "land sea sea". The first measure has a whole rest. The second measure contains the notes G4, A4, Bb4, C5, marked *mp*. The third measure has a whole rest. The fourth measure contains the notes G4, A4, Bb4, C5, marked *mf* with a fermata.

A.

Musical staff for A. with lyrics "a-cross the sea". The first measure has a whole rest. The second measure contains the notes G4, A4, Bb4, C5, marked *f*. The third measure has a whole rest. The fourth measure contains the notes G4, A4, Bb4, C5, marked *mp*, *mf*, and *mp* with dynamic markings.

A.

Musical staff for A. with lyrics "sea". The first measure has a whole rest. The second measure contains the notes G4, A4, Bb4, C5, marked *f*. The third measure has a whole rest. The fourth measure has a whole rest.

Vln.

Musical staff for Vln., showing a whole rest in each of the four measures.

13

S. Solo

S. *f*
 sea _____ the sea _____ In strife

S. *p* *f* *mp*
 sea _____ sea _____ sea _____

A. *f*
 sea a cross a cross the and tur

A. *mp* *f* *mp* *f*
 sea _____ sea _____ sea _____ In strife

Vln.

S. Solo

S.

mf *f* *mf*

and tur_____moil In strife and tur_____moil

S.

f *mf* *f* *mp*

In strife and tur_____moil In strife my

A.

f *mf* *mp*

_____moil In strife tur_____moil my

A.

f *mf*

In strife and tur_____moil my

Vln.

22

S. Solo

mp

S. *fu-gi-tive fu-gi-tive thoughts to*

mp *p*

S. *fu-gi-tive thoughts turn a way*

mp *p*

A. *fu-gi-tive fu-gi-tive turn a-way*

mp *p*

A. *thoughts thoughts turn a way a way*

Vln.

26

rubato

mf

S. Solo

Musical staff for S. Solo, starting with a treble clef and a key signature of two flats. The staff contains a whole rest in the first three measures, followed by a quarter note G4, an eighth note F4, a quarter note E4, and a quarter note D4 in the fourth measure.

Think of my dear est

S.

Musical staff for S., starting with a treble clef and a key signature of two flats. The staff contains a quarter rest, followed by a quarter note G4, a quarter note F4, and a quarter note E4 in the first measure, and whole rests in the following three measures.

place

S.

Musical staff for S., starting with a treble clef and a key signature of two flats. The staff contains a quarter note G4, a quarter rest, and whole rests in the following three measures.

the

A.

Musical staff for A., starting with a treble clef and a key signature of two flats. The staff contains a whole rest, a quarter note G4, a quarter note F4, and whole rests in the following two measures.

my dreams

A.

Musical staff for A., starting with a treble clef and a key signature of two flats. The staff contains a whole rest, a quarter rest, a quarter note G4, and whole rests in the following two measures.

of

Vln.

Musical staff for Vln., starting with a treble clef and a key signature of two flats. The staff contains a whole rest, followed by a quarter note G4, and an ascending eighth-note scale (A4, B4, C5, D5, E5, F5, G5) in the second measure. The final two measures contain whole notes G5 and F5, each with a fermata.

rubato

p

mf

Start slowly and in time, slowly get out of time and separate each vocal line so every singer is singing in a different tempo and is out of time. Allow music to become distorted and extremely polyphonic. Use these bars as a guide. Slowly start to crechendo and accelerando until the singers have reached a similar tempo to the beginning violin will stay the same throughout including the slow tempo until the very end.

Repeat 39-40 as desired

35 rit. *mp* *p* 1st Time Only

S. Solo

u - oh_____

S. *mp*

oo_ ah_____

S. *mp*

sea_____

A. *mp*

sea_____

A. *mp*

sea_____

Vln. rit.

mf

♩=78

40

S. Solo

S.

oo ah In the land

S.

sea sea

A.

oo across the across the sea

A.

mf
In the land sea

♩=78

Vln.

mp

44

accel.

♩=105

S. Solo

mf _____ *f*

sea sea the sea

mf _____ *f*

sea sea sea sea

mf

sea across a-cross the

mf

sea sea sea

accel.

♩=105

Vln.

pp

49

♩=60

S. Solo

S.

S.

A.

A.

Vln.

♩=60

rubato

53

S. Solo

S.

S.

A.

A.

Vln.

57

♩=105

S. Solo

S.

think

S.

Think of my

A.

Think of my

A.

dear est Think

Vln.

♩=105

60

S. Solo

Musical staff for S. Solo, measures 60-62, showing rests.

S.

Musical staff for S., measures 60-62, showing rests.

S.

Musical staff for S., measures 60-62, showing rests.

A.

Musical staff for A., measures 60-62, with lyrics "Think of my" and dynamic marking *pp*.

A.

Musical staff for A., measures 60-62, with lyrics "dear est Think dear est Think" and dynamic marking *ppp*.

Vln.

Musical staff for Vln., measures 60-62, showing rests.