

Shiori Usui

Inhaling/Exhaling

for brass quintet and piano

(2007)

FULL SCORE

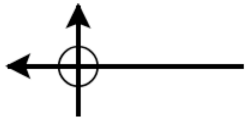
Item 1/15

Commissioned by Philharmonie Essen and Deutschlandfunk.

Notation



Inhale



Inhale with lip vibrato



Exhale

"p"

Dynamics indicated in quotation marks: these refer to the intensity of the performance manner rather than the resultant dynamics.



Rip glissando



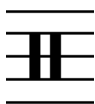
Flutter-tongue

Sing while you play

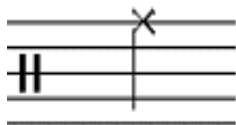


Sing the diamond shaped notes while you play
(sing an octave/two octaves higher if it is too low).

Phonemes are produced through the instruments unless it is indicated otherwise.
Follow the basic pitch contours below as a guide for relative pitches of the notes.



The percussion clef used in combination with a five-line staff: It only indicates the approximate pitches of high, middle or low.



High range of pitch



Middle range of pitch



Low range of pitch



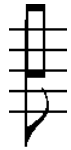
The highest voice possible



The lowest voice possible



Sound or playing technique gradually changes from one to another.



Slam the lid of piano

Accidentals

Usual rules of accidentals apply (i.e. they are only valid for all the notes of that pitch in that octave for the remaining duration of the bar).

International Phonetic Alphabet¹

Consonants (pulmonic)

[h]	<u>h</u> as in <u>h</u> at	glottal-fricative
[m]	<u>m</u> as in <u>m</u> ow	bilabial-nasal
[b]	<u>b</u> as in <u>b</u> at	bilabial-plosive
[ʕ]		pharyngeal-fricative (voiced)
[ʐ]		retroflex-fricative

Vowels

[i]	<u>i</u> as in s <u>i</u> de	front - closed
[e]	<u>a</u> as in sp <u>a</u> de	front - closed-mid
[a]	<u>a</u> as in l <u>a</u> mb	front – open
[ɛ]		front-open-mid
[ə]		central – close-mid
[u]		back-closed
[ʊ]		back-close-mid

¹ [online] <http://www.langsci.ucl.ac.uk/ipa/index.html> International Phonetic Association. Accessed on 11/06/10.

Examples of pronunciation taken from Blatter, Alfred; *Instrumentation and Orchestration*. 2nd Edition, USA: Wadsworth/Thomson Learning, (1997), pp.474 - 475.

THE INTERNATIONAL PHONETIC ALPHABET (revised to 2005)

CONSONANTS (PULMONIC)

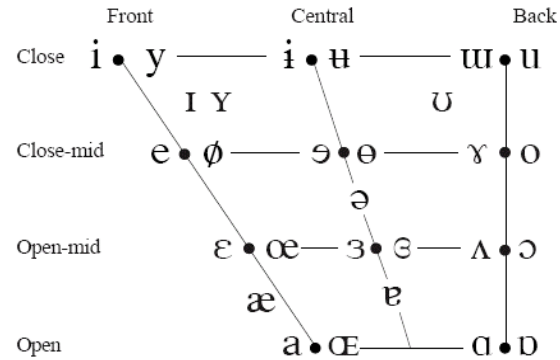
© 2005 IPA

	Bilabial	Labiodental	Dental	Alveolar	Postalveolar	Retroflex	Palatal	Velar	Uvular	Pharyngeal	Glottal
Plosive	p b			t d		ʈ ɖ	c ɟ	k ɡ	q ɢ		ʔ
Nasal	m	ɱ		n		ɳ	ɲ	ŋ	ɴ		
Trill	ʙ			ʀ					ʀ		
Tap or Flap		ⱱ		ɾ		ɽ					
Fricative	ɸ β	f v	θ ð	s z	ʃ ʒ	ʂ ʐ	ç ʝ	x ɣ	χ ʁ	ħ ʕ	h ɦ
Lateral fricative				ɬ ɮ							
Approximant		ʋ		ɹ		ɻ	j	ɰ			
Lateral approximant				l		ɭ	ʎ	ʟ			

Where symbols appear in pairs, the one to the right represents a voiced consonant. Shaded areas denote articulations judged impossible.

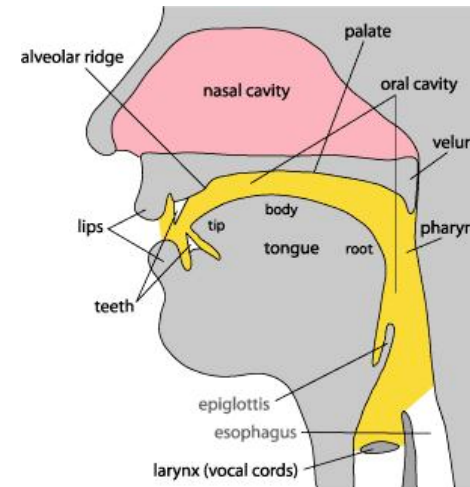
2

VOWELS



Where symbols appear in pairs, the one to the right represents a rounded vowel.

3



4

² [online] <http://www.langsci.ucl.ac.uk/ipa/pulmonic.html> International Phonetic Association. Accessed on 11/06/10.

³ [online] <http://www.langsci.ucl.ac.uk/ipa/vowels.html> International Phonetic Association. Accessed on 11/06/10.

⁴ [online] http://www.englishbaby.com/lessons/3201/member_submitted/vocal_organ_of_speech Accessed on 11/06/10.

Instrumentation

Trumpet in E flat
Trumpet in C (straight mute)

Horn in F

Tenor Trombone (F Attachment)
Bass Trombone (E Attachment)

Piano (small cotton cloth and two metal beaters)

The score is transposed.

Duration: ca. 3'40''

Inhaling/Exhaling

Shiori Usui

4/4 ♩ = ca.50
"gasping for air, loneliness, time passing extremely slowly"

7/4

Horn in F

Trumpet in E♭

Trumpet in C

Tenor Trombone

Bass Trombone/
Tuba

Piano

* Inhale through inst.
almost voiceless — voiced

he he he ε ε ε
"p" < "mp" > "p" < f

* Inhale through inst., sempre
voiced — INTO THE PIANO — croaking sound

he he h he he i i i e
mf < p mf < f p

he e i r

gliss.

5 7 5

croaking sound

mf

4/4 ♩ = ca.50
"gasping for air, loneliness, time passing extremely slowly"

7/4

Ped.

* Alternatively exhale if it is too difficult.

7/4 4/4

Hn. Exhale through inst., voiced, plosive sound

E♭ Tpt.

C Tpt.

Tbn. Exhale through inst. voiced voiceless Sing diamond shaped note while playing (sing an octave higher if it is too low).

uh! ff "f" mf f p

Exhale through inst., voiced voiced croaking sound

Tba. gliss. uh! p fff he mf a i ff p gliss.

7/4 4/4

Pno. Catch and sustain vibration of strings.

I.v. 8^{ub} 2^{ed}

6

Hn.

E♭ Tpt.

C Tpt.

Tbn.

Tba.

Pno.

voiced (not croaking)

7

he he he he he

mp *p*

voiced (not croaking) — croaking voice —

ha → e → r

p *f* *p*

gliss.

voiced (not croaking)

9

he he he he

mf

8

Hn.

E♭ Tpt.

C Tpt.

Tbn.

Tba.

Pno.

without inst., sudden and forceful suckig of air "like a hiccup"

ah

kissing/smacking sound through the inst.

Sing the diamond shaped note while playing (sing one/two octave(s) higher if it is too low)

voiced, growling sound → voiceless

voiced → croaking → voiced → croaking

Exhale through inst., voiced, throat gargling sound

mf

f

p

f

mf

p

ff

"p" < "mf" > "p" < "ff"

he he hɪ

a → e

gliss.

he he he he he he he

p fp

p mf p ff pp

10 **4/4** poco accel.

Hn.

E♭ Tpt.

C Tpt.

Tbn.

Tba.

Exhale through inst.,
voiced, throat gargling sound

voiced (not croaking) voiced voiced (not croaking) voiced voiced (not croaking)

9 7 3

gliss.

ha ha he ξε hɣ hɣ ξε ha r

mp *f* *mf* *p* *mf* *f*

4/4 poco accel.

Pno.

II

Hn. *norm.* Sing diamond shaped note while playing (sing one/two octave(s) higher if it's too low). *p* *mf*

E♭ Tpt.

C Tpt. without inst. voiced *mf* *p* he he he he he

Tbn. *p* *fp* *f* *p* *mf* *p* *mf* *p* *mf* *p*

Tba. voiced (not croaking) *gliss.* *p* *ff* *pp* *mf* *gliss.* voiced croaking sound

Pno. PICK UP METAL BEATER. Very slowly scrape lowest string of piano with metal beater.

mf *p*

Red.

A ♩ = ca. 50

12

Hn. *f* norm.

E♭ Tpt.

C Tpt.

Tbn. *mp* *f* *mf* *f* voiceless voiceless norm.

voiced croaking sound voiced (not croaking) croaking NOT croaking voiced croaking sound voiced

Tba. *gliss.* *mf* *f* *ff* *mp* *f mp* *mf mp* *f*

a hi he e ha ha he he hv he he

mf *ff* *mp* *f mp* *mf mp* *f*

Detailed description: This block contains the musical notation for five instruments: Horn (Hn.), Eb Trumpet (E♭ Tpt.), C Trumpet (C Tpt.), Trombone (Tbn.), and Trombone (Tba.). The Horn part starts at measure 12 with a whole note chord, marked *f* and *norm.*. The Eb and C Trumpets are silent. The Trombone part features a melodic line with dynamic markings *mp*, *f*, *mf*, and *f*. Above the Tbn. staff, arrows indicate 'voiceless' sections. The Tba. part includes a glissando, followed by a series of notes with lyrics: 'a', 'hi', 'he', 'e', 'ha', 'ha', 'he', 'he', 'hv', 'he', 'he'. Dynamics range from *mf* to *ff*. Above the Tba. staff, arrows indicate 'voiced' and 'croaking sound' sections. A '7' is written above several notes in both the Tbn. and Tba. parts.

A ♩ = ca. 50

Pno. COVER STRINGS WITH COTTON CLOTH. Hit strings with metal beater.

f *8^{sub}*

Detailed description: This block shows the Piano (Pno.) part. The upper staff is mostly silent, with the instruction 'COVER STRINGS WITH COTTON CLOTH.' written across it. The lower staff has a whole note chord, marked *f*. At the end of the piece, there is a dynamic marking *8^{sub}* and a dashed line.

13

Hn. *flut., voiced*
mf

E♭ Tpt. *without inst., croaking sound*
mp
gliss.
 he a

C Tpt.

Tbn. *voiced, growling sound*
mf
f

Tba. *NOT croaking* → *croaking*
5
gliss.
 hi → e he sr ha mʃ
mp → *f* → *mf* → *ff*
voiced → *NOT croaking* → *voiced*
growling sound
gliss.
3
 norm. → *voiced*
8vb
 e

Pno. *PICK UP ANOTHER METAL BEATER.*
sim.
9
mf
8vb
f *mf*

14

Hn. *f* *p* *mf* *p* voiceless norm.

E♭ Tpt. *f*

C Tpt. *mf* norm. voiced NOT croaking sound croaking sound

Tbn. *mp* *f* *mf* he he hɿ hi hɿ he

Tba. *f* *p* *mf* hi hə hɿ hɿ hi hi gliss. NOT croaking

Pno. TAKE OFF COTTON CLOTH FROM STRINGS. Hit strings with metal beater. COVER STRINGS WITH COTTON CLOTH.

(8).....

15 "difficulty of breathing leading into panic"

Hn. voiceless *f*

E♭ Tpt. *mf* *mp*

C Tpt. *mp* senza sord.

Tbn. *mf* a *mp* hə he

Tba. *p* *f* *mf* *f* *mp* *f* *mp* *p* *mf*

Pno. Hit strings with metal beater. *mf* *f* *ff* TAKE OFF COTTON CLOTH FROM STRINGS.

hi hi hɪ
norm. → Speak while play.
voiced NO croaking sound
voiced, NO croaking sound
voiced, croaking sound
slap tongue

16

Hn. *f* he he *mf* hi *p* *mf* *mf* *mp*

E♭ Tpt. *mf* *p* *mf* *p* con sord. (straight mute) *mp*

C Tpt. *mp*

Tbn. *f* *p* *f* *mf* he he *mf*

Tba. *mp* *p* *f* *mp* *f* *p* *f*

Pno. (Hit strings with metal beater.) *mf* *f* norm. LEAVE METAL BEATER IN L.H. *f*

voiced, NOT croaking

voiced norm.

voiced

voiced, NOT croaking

voiced

voiced NOT croaking

voiced NOT croaking

3 norm.

gliss.

gliss.

8^{vb}

8^{vb}

a

Sing diamond shaped note while playing (sing one/two octaves higher if it is too low).

Poco a poco accel. -----

17

Hn. *fp* *mf* *mf* *fp* *fp*

E♭ Tpt. *mp* *f* *mp* *p*

C Tpt. *p* *mf* *p*

Tbn. *mf* *f* *mf* *f* *mp* *f* *p*

Tba. *fp* *mp* *fp* *f* *mp* *f* *mf* *f* *mf* *he he* *he he* *mp*

Pno. *ff* *f*

voiced. *mf* *fp*

voiced. norm.

voiced

voiced NOT croaking

voiced NOT croaking

voiced

voiced NOT croaking

norm.

gliss.

8^{vb}

Sing diamond shaped note while playing (sing one/two octaves higher if it is too low).

Horn (Hn.)
18 norm. *fp* *f* *p* *ff* *mf* *croaking
ah

E♭ Trumpet (Eb Tpt.)
mf *f* *mf* *f*

C Trumpet (C Tpt.)
mf *f* *mf*

Trombone (Tbn.)
f *f* *ff* voiceless *mp* *ff* *mf* *f*
voiced NOT croaking → "like a hiccup" → voiced, NOT croaking
he hr he hr he ah

Tuba (Tba.)
f *mf* *sf* *f* *mf* *sf* *mf* *ff* *mf* *mp* *ffp*
voiced NOT croaking → "like a hiccup" → voiced, NOT croaking
he ah he ah he hr he hr

Piano (Pno.)
ff *ff* *ff*
8^{vb} 8^{vb} 8^{vb}

Detailed description: This page of a musical score, numbered 13, features six staves. The top five staves are for brass instruments: Horn (Hn.), E♭ Trumpet (Eb Tpt.), C Trumpet (C Tpt.), Trombone (Tbn.), and Tuba (Tba.). The bottom staff is for Piano (Pno.). The Horn part begins with a dynamic of *fp* and includes a section marked '*croaking' with a 'norm.' dynamic. The E♭ Trumpet and C Trumpet parts feature glissando markings and dynamics ranging from *mf* to *f*. The Trombone and Tuba parts include articulation like 'like a hiccup' and dynamics from *f* to *ffp*. The Piano part provides harmonic support with *ff* dynamics and includes octave markings (8^{vb}). The score is divided into measures by vertical bar lines and includes various musical notations such as slurs, accents, and dynamic hairpins.

B A tempo (♩ = ca. 40)

5
4 **4**

19

Hn. *f*

E♭ Tpt. *mf* *f* *p*

C Tpt. *f* *p*

Tbn. *ff* *f* *fp* *f*

Tba. *f* *ff* *mf* *ff* *mp* *pp*

*croaking

norm.

NOT croaking

norm.

Sing diamond shaped note while playing.

voiced

voice-less

he ha

he he he he he he h

B A tempo (♩ = ca. 40)

5
4 **4**

Pno. *fff*

Slam lid of piano.

Ped. Hold pedal until sound fades out...

(8).....

(8).....

21 **4/4** **5/4** **3/4**

Hn. *p*

E♭ Tpt. *p* senza sord. *p*

C Tpt. *p*

Tbn. forceful sucking sound of air
voiced, "like a hiccup"
ah *mf*

voiced (not croaking)
ah *f* əh *mp*

Tba. norm. *f*

Pno. **4/4** **5/4** **3/4**

"still anxious, refusing to relate with the outside world..., stiff body..., self-torment..., more and more stiff body... wanting to become smaller and smaller"

Vibrate vocal folds, voiced

24

3/4 **4/4**

Hn. *p* *mf* *p* *f* du

E♭ Tpt. *mp*

C Tpt. *mp*

Tbn. norm. voiced *mf* *p* *mf* *fp* *mf* du

Tba. *f* *mf* *mf* *ff* *p* *gliss.*

Pno. OPEN THE LID OF PIANO GRADUALLY AND PICK UP METAL BEATER.

26

Hn. *voiced*
mp *p*
du
mf *f* *p* *norm.*
3

E♭ Tpt.

C Tpt.

Tbn. *gliss.*
mp
voiced
f
za
"like crying" *norm.*
7 *norm.*
p *f* *p* *mf* *p*

Tba. *5*
ff
mſ *mſ* *mſ* *mſ* *mſ* *mſ*
7
8^{vb}
mf *f* *p*

Pno. *Quickly scrape string (swishing sound).*
8^{vb}
f
Red.
LEAVE METAL BEATER.
(h)♯(h)
p
(h)♭
8^{vb}

28

Hn. *norm.*
fp < *mf* > *p*

E♭ Tpt. *p*

C Tpt. *mp*
*mf**p*

Tbn. *p* *f* *mf* *f* *mf* *f*
voiced "like a hiccup" kissing/smacking sound through inst.

Tba. *f* < *ff* > *mp* *mf* *f* *mf* *f* < *mf* > *mf*
voiced "like a hiccup" voiced

Pno.

(8).....

Detailed description of the musical score: The score is for a page numbered 18. It features six staves: Horn (Hn.), Eb Trumpet (E♭ Tpt.), C Trumpet (C Tpt.), Trombone (Tbn.), Trumpet (Tba.), and Piano (Pno.).
 - **Horn (Hn.):** Starts at measure 28 with a 'norm.' marking. The dynamic is *fp* < *mf* > *p*.
 - **E♭ Trumpet (E♭ Tpt.):** Enters at measure 28 with a seven-measure rest, followed by a melodic line starting on a dotted quarter note, marked *p*.
 - **C Trumpet (C Tpt.):** Enters at measure 28 with a seven-measure rest, followed by a melodic line marked *mp*. A *mf**p* marking appears at the start of the second measure of the score.
 - **Trombone (Tbn.):** Enters at measure 28 with a seven-measure rest. The dynamic is *p*. The first note is marked *f*. There are instructions: 'voiced' with a circle and arrow, 'like a hiccup' with a circle and arrow, and 'kissing/smacking sound through inst.' with a circle and arrow. Notes are marked with 'e' and 'ah'.
 - **Trumpet (Tba.):** Enters at measure 28 with a seven-measure rest. The dynamic is *f*. There are instructions: 'voiced' with a circle and arrow, and 'like a hiccup' voiced with a circle and arrow. Notes are marked with 'mf', 'ff', and 'mp'. A triplet of notes is marked *mf*.
 - **Piano (Pno.):** The piano part is mostly silent, with some notes in the bass clef.
 - At the bottom, there is a circled number (8) followed by a dotted line.

30

voiced → norm.

Hn.

f *mp* *f* *p* < *mf* > *p*

E♭ Tpt.

f

C Tpt.

f

Tbn.

voiced → norm.

f *p* *f* *p*

Tba.

norm.

mſ *mſ* *mſ* *mſ* *mſ* *mſ*

mfp *f* *mp* *f*

gliss.

3

voiced

mſ *mſ* *mſ*

f

Pno.

PICK UP METAL BEATER.

VERY SLOWLY scrape lowest string of piano with metal beater.

f *8^{vb}* *Ped.*

C

C

33

Hn.

E \flat Tpt.

C Tpt.

Tbn.

Tba.

Pno.

norm.

mf

p

mf > *p*

norm.

f

p

f

gliss.

3

m *f* *m* *f* *m* *f* *m* *f* *m* *f* *m* *f*

37

Hn.

E♭ Tpt.

C Tpt.

Tbn.

Tba.

Pno.

voiced

norm.

voiced

sim.

*m*_f

*m*_f

*m*_f

Detailed description: This page of a musical score covers measures 37, 38, and 39. The score is arranged in a system with six staves. From top to bottom, the staves are for Horn (Hn.), E-flat Trumpet (E♭ Tpt.), C Trumpet (C Tpt.), Trombone (Tbn.), Trombone (Tba.), and Piano (Pno.). The Horn, E-flat Trumpet, C Trumpet, and Trombone staves contain only rests. The Trombone (Tba.) staff contains the primary melodic material. In measure 37, it begins with a half note G2, followed by a quarter note G2, and a quarter note G2. A slur covers the first two notes, with a dynamic marking of *m*_f below. Above the first note is a circle with a left-pointing arrow and the word "voiced". Above the second note is the word "norm.". In measure 38, it starts with a quarter rest, followed by a quarter note G2, and a quarter note G2. A slur covers the last two notes, with a dynamic marking of *m*_f below. Above the first note of this measure is a circle with a left-pointing arrow and the word "voiced". In measure 39, it begins with a quarter rest, followed by a quarter note G2, and a quarter note G2. A slur covers the last two notes, with a dynamic marking of *m*_f below. Above the first note of this measure is a circle with a left-pointing arrow and the word "sim.". The Piano (Pno.) staff contains rests for all three measures.

40

Hn.

E♭ Tpt.

C Tpt.

Tbn.

Tba.

Pno.

mf

p

norm.

mf

gliss.

voiced

norm.

mf

ff

43

3
4

Hn.

E♭ Tpt.

C Tpt.

Tbn.

Tba.

Pno.

voiced → Vibrate vocal folds → voiceless

mf → h → "p"

norm. lip vibrato

STAND AND PLAY INTO PIANO

f < fff

p

3
4

Ped.